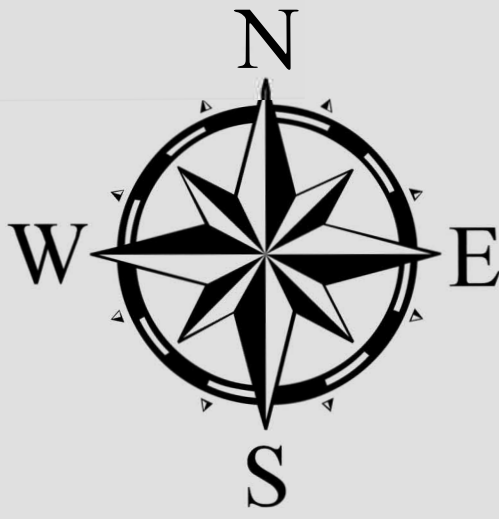




POLLING PLACE

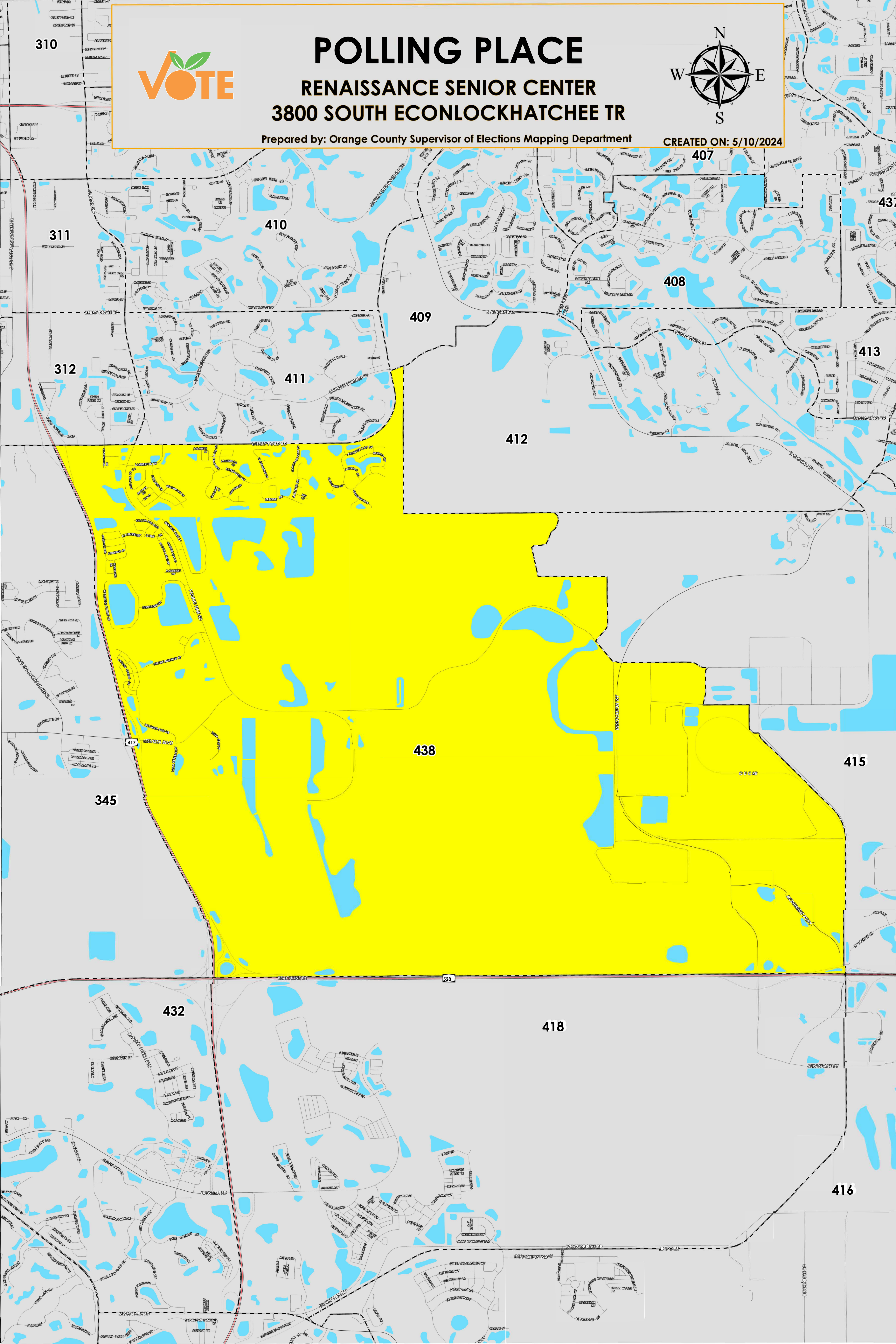
RENAISSANCE SENIOR CENTER

3800 SOUTH ECONLOCKHATCHEE TR



Prepared by: Orange County Supervisor of Elections Mapping Department

CREATED ON: 5/10/2024



The Polling Place for Precinct 438 is Renaissance Senior Center at 3800 South Econlockhatchee Trail.

Precinct 438 (2024) northern boundary follows along Curry Ford Road and stops at Cypress Springs Parkway, then goes down just southeast of Andover Cay Boulevard. The western boundary follows along State Road 417. The southern boundary follows along State Road 528, and the eastern boundary starts perpendicular and traverses' north alongside Monument Parkway and then cuts across Innovation way, zig zags up just southeast of Andover Cay Boulevard to Cypress Springs Parkway.

Precinct 438 contains sub precincts of:

438A is with district assignments of U.S. Congress 10, State Senate 17, State House 35, County Commission 4, and School Board 2.

438B is with district assignments of U.S. Congress 10, State Senate 17, State House 43, County Commission 4, and School Board 2.

For more detailed views of other county and municipal precincts, [visit the District and Precinct Maps page](#). For more information about precinct boundaries, contact the [Orange County Supervisor of Elections office](#)

This map was produced by the Orange County Supervisor of Elections Mapping Department. Additional voter information can be found [on our website](#).