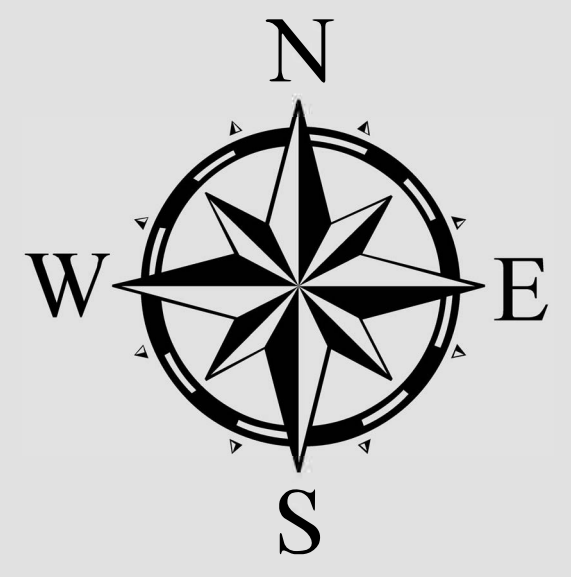




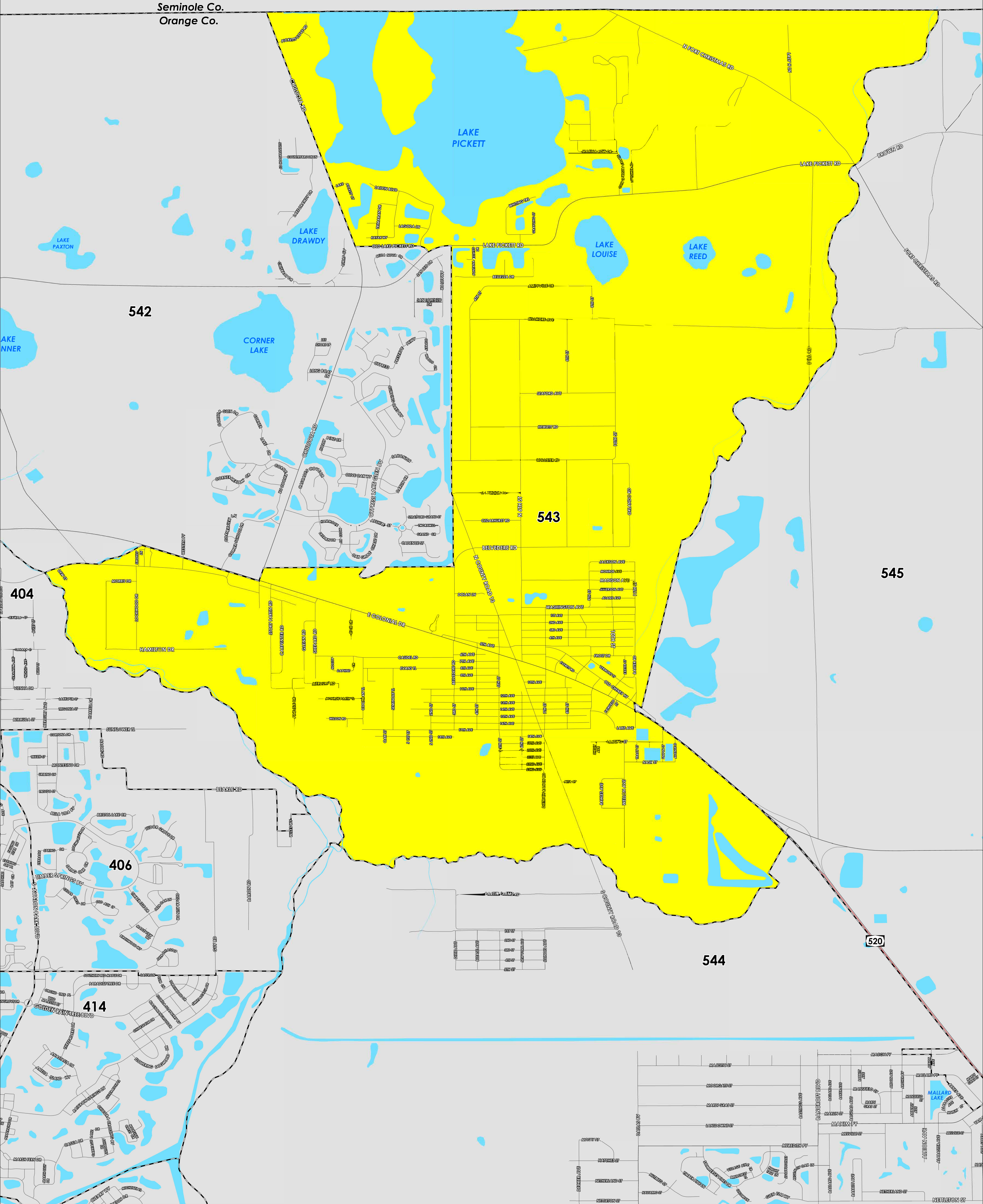
POLLING PLACE

BITHLO COMMUNITY CENTER
18501 WASHINGTON AVE

Prepared by: Orange County Supervisor of Elections Mapping Department



CREATED ON: 1/29/2024



The Polling Place for Precinct 543 is Bithlo Community Center at 18501 Washington Avenue.

Precinct 543 (2024) northern boundary follows a combination along the Seminole/Orange County and continues south of Darlin Circle, East Colonial Drive and extends to Old Cheney Highway. The western boundary follows a road combination of Chuluota Road, parallel west of 4th Street, and extends alongside the Econlockhatchee River. The southern boundary follows parallel north of Partin Farms Road and extends southeast of Wellon Avenue. The eastern boundary follows east of Nash Street and East Orlando Road then continues east of Lake Reed and extends east of Lazy H Lane.

Precinct 543 contains sub precincts of:

543A is with district assignments of U.S. Congress 10, State Senate 17, State House 35, County Commission 5, and School Board 1.

543B is with district assignments of U.S. Congress 10, State Senate 17, State House 37, County Commission 5, and School Board 1.

For more detailed views of other county and municipal precincts, [visit the District and Precinct Maps page](#). For more information about precinct boundaries, contact the [Orange County Supervisor of Elections office](#)

This map was produced by the Orange County Supervisor of Elections Mapping Department. Additional voter information can be found [on our website](#).