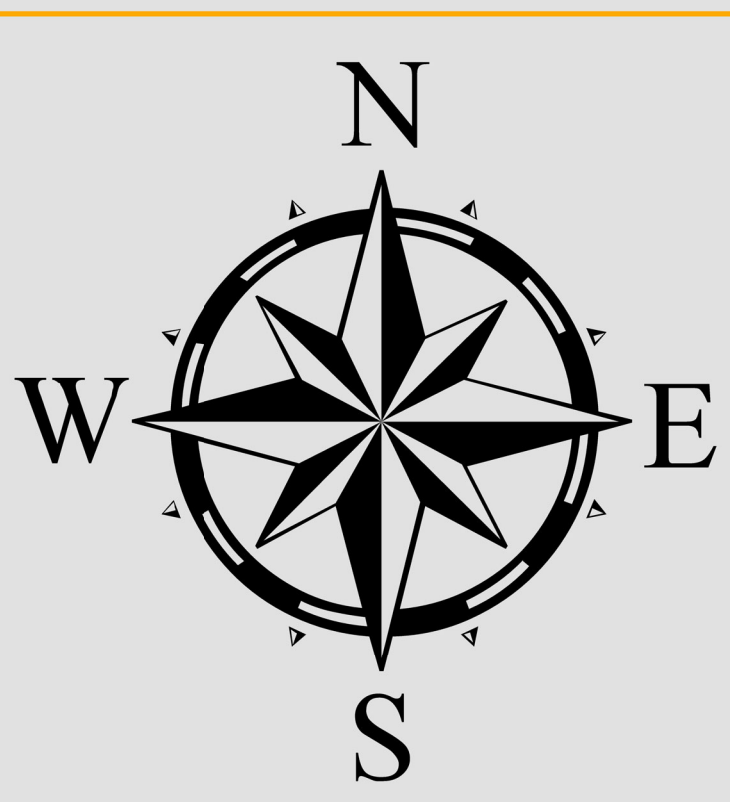




PRECINCT 412

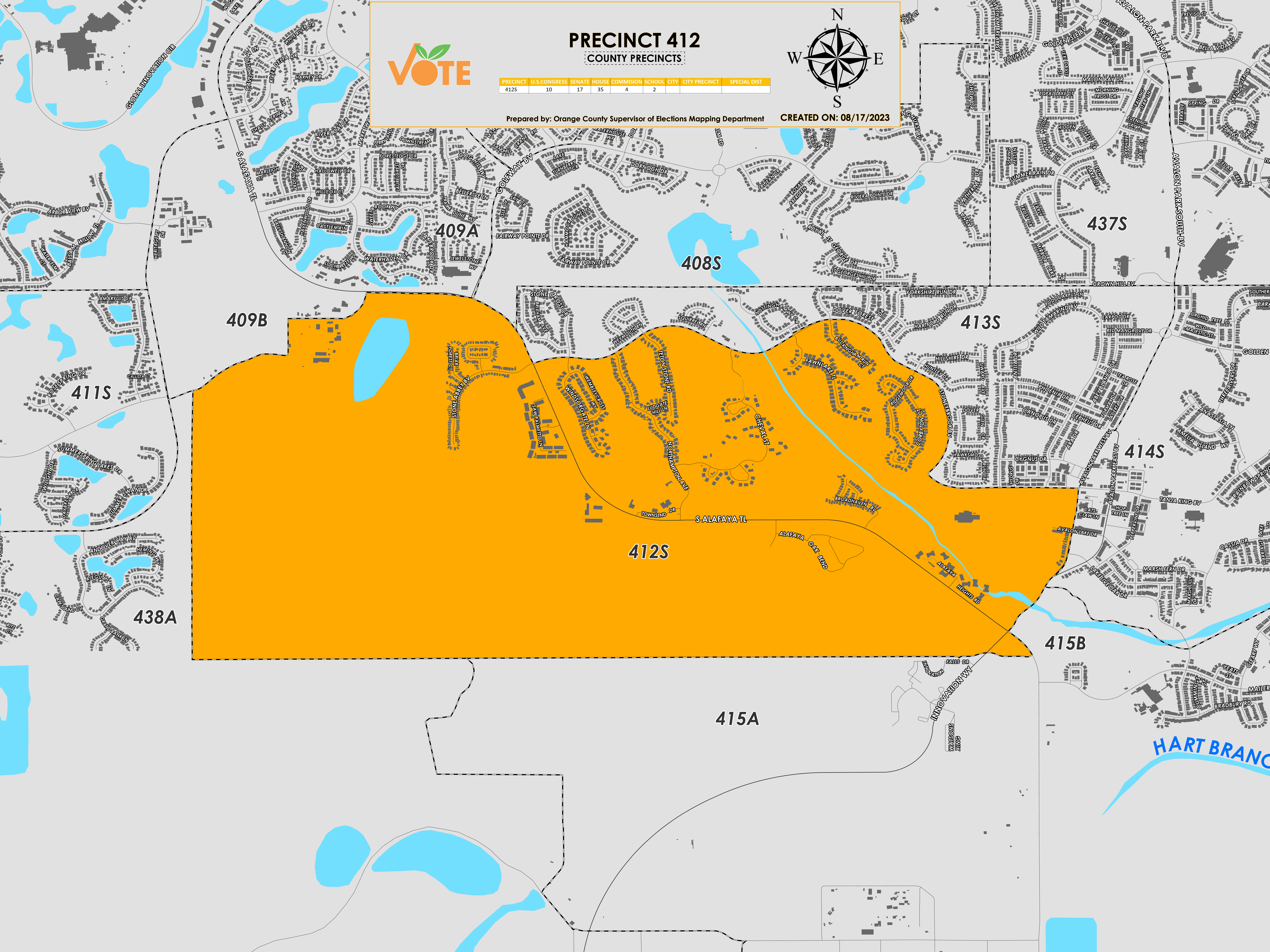
COUNTY PRECINCTS

PRECINCT	U.S. CONGRESS	SENATE	HOUSE	COMMISSION	SCHOOL	CITY	CITY PRECINCT	SPECIAL DIST
412S	10	17	35	4	2			



Prepared by: Orange County Supervisor of Elections Mapping Department

CREATED ON: 08/17/2023



Precinct 412 (2024) northern boundary follows along Stoney Brook Boulevard and a section of South Alafaya Trail and continues to zig zag east towards Curry Ford Road. The western boundary follows alongside Curry Ford Road, the southern boundary is perpendicular to South Alafaya Trail and traverses towards Curry Ford Road. The eastern boundary follows along Avalon Park West Boulevard.

Precinct 412 contains sub precincts of:

412S is with district assignments of U.S. Congress 10, State Senate 17, State House 35, County Commission 4, and School Board 2.

For more detailed views of other county and municipal precincts, [visit the District and Precinct Maps page](#). For more information about precinct boundaries, contact the [Orange County Supervisor of Elections office](#)

This map was produced by the Orange County Supervisor of Elections Mapping Department. Additional voter information can be found [on our website](#).