

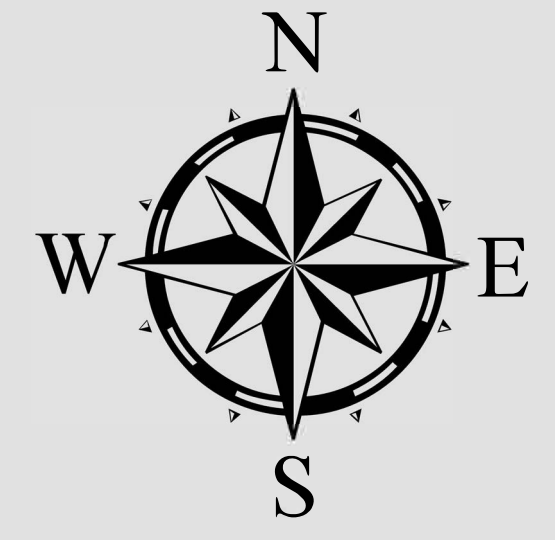


POLLING PLACE

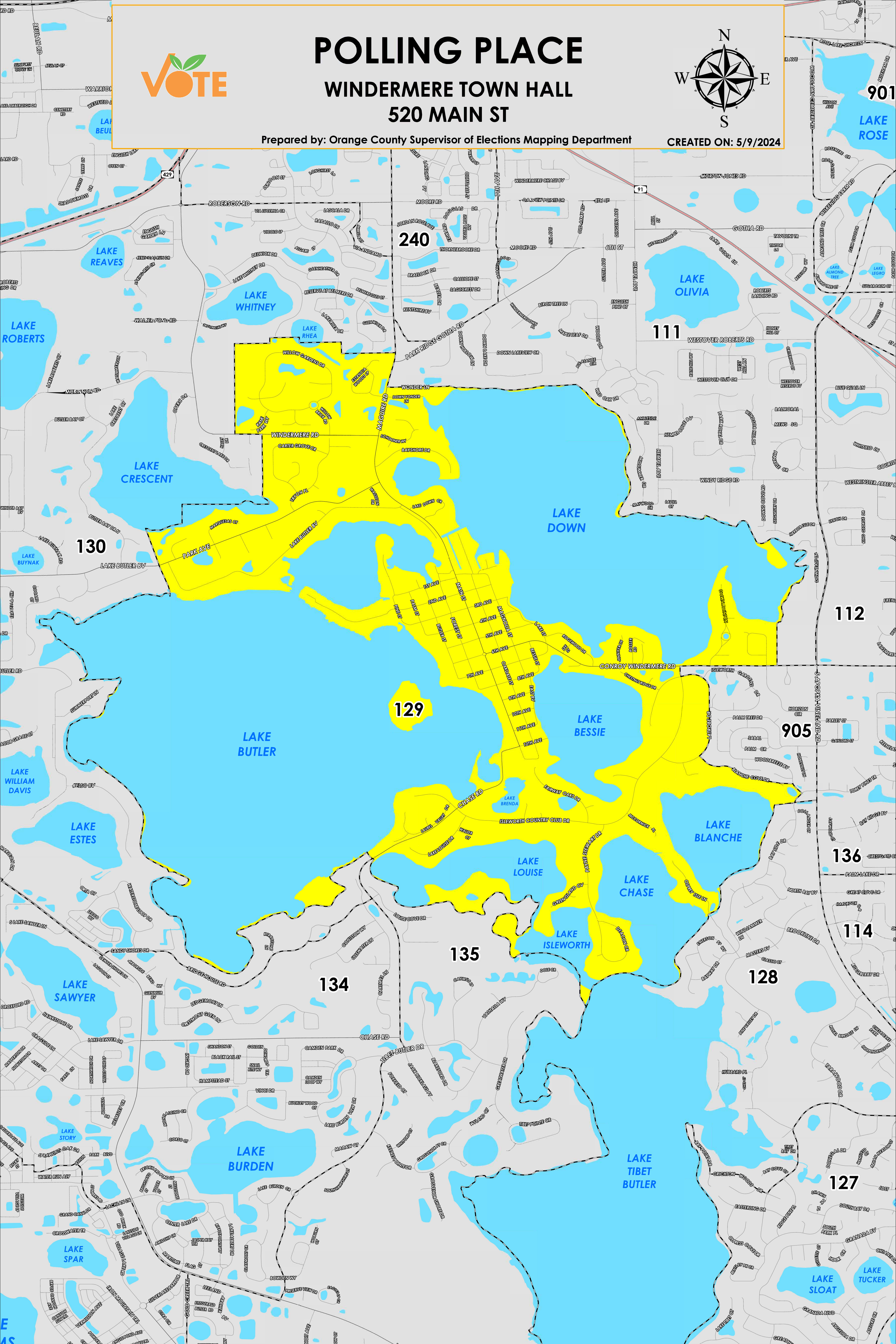
WINDERMERE TOWN HALL

520 MAIN ST

Prepared by: Orange County Supervisor of Elections Mapping Department



CREATED ON: 5/9/2024



The Polling Place for Precinct 129 is Windermere Town Hall at 520 Main Street.

Precinct 129 (2024) northern boundary follows a combination of the northern shoreline of Lake Down, Wonder Lane and extends south of Lake Whitney. The western boundary follows parallel east of Windermere Road, along the southern shoreline of Lake Crescent, then along the western and southern shorelines of Lake Butler continuing into the southern boundary. The southern boundary follows north of Louise Cove Drive and extends south of Deacon Circle. The eastern boundary follows a combination along the eastern shorelines of Lake Chase and Lake Blanche, Latrobe Drive and extends to the eastern shoreline of Lake Down.

Precinct 129S is with district assignments of U.S. Congress 11, State Senate 13, State House 45, County Commission 1, and School Board 4.

For more detailed views of other county and municipal precincts, [visit the District and Precinct Maps page](#). For more information about precinct boundaries, contact the [Orange County Supervisor of Elections office](#)

This map was produced by the Orange County Supervisor of Elections Mapping Department. Additional voter information can be found [on our website](#).