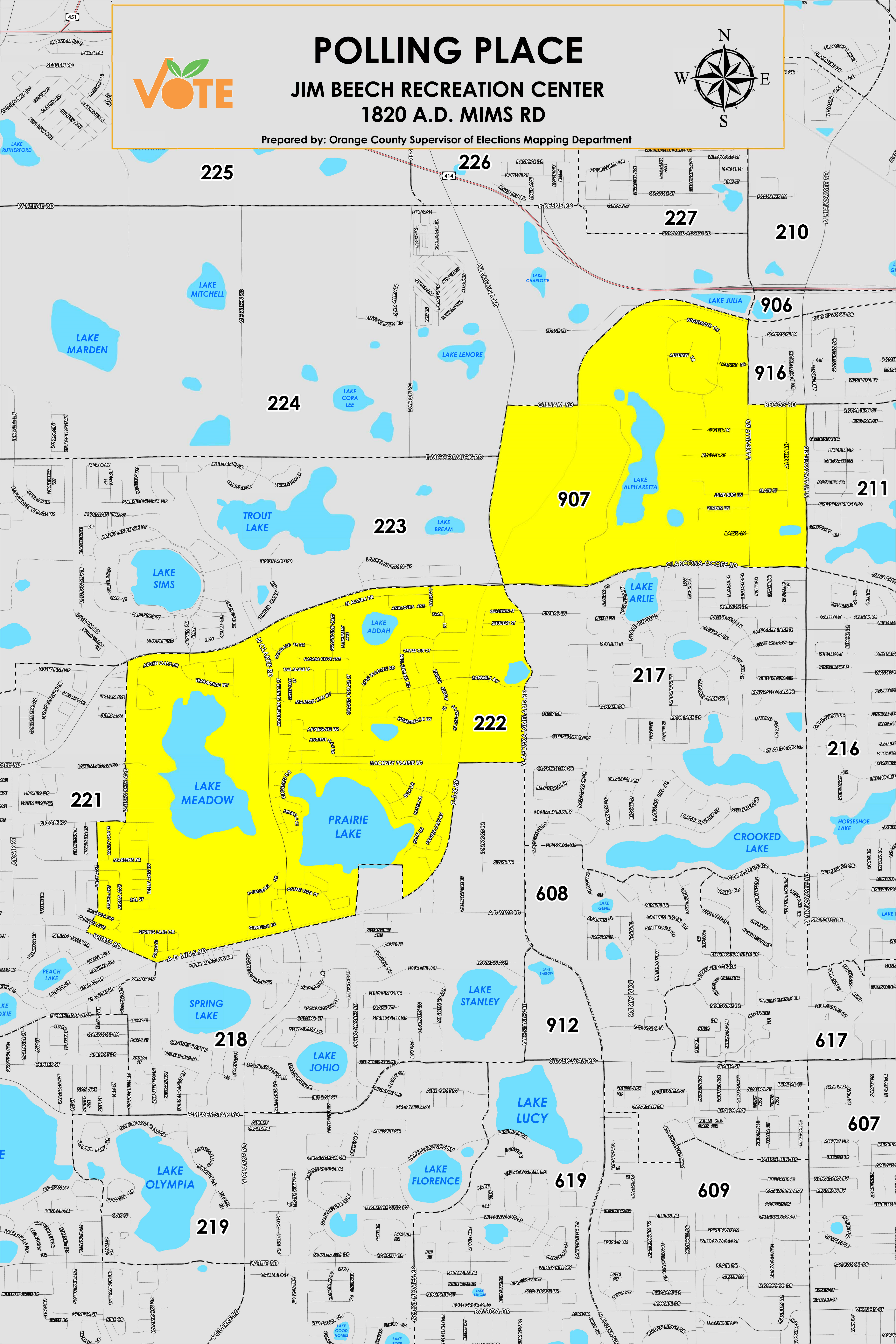


**Prepared by: Orange County Supervisor of Elections Mapping Department**



The Polling Place for Precincts 222 and 907 is Jim Beech Recreation Center at 1820 A.D. Mims Road.

Precinct 222 (2024) northern boundary follows along Clarcona Ocoee Road, the western boundary follows along Lake Meadow Road, Lauren Beth Avenue and extends to Lady Avenue. The southern boundary follows along Wurst Road to A.D. Mims Road, then continues just at the southeastern shore of Prairie Lake to Hackney Prairie Road. The eastern boundary follows east of Prairie Lake Boulevard and continues onto North Apopka Vineland Road.

Precinct 907 (2024) northern boundary follows along Gilliam Road and continues parallel north of Stone Road to Beggs Road. The western boundary follows along North Apopka Vineland Road, the southern boundary follows along Clarcona Ocoee Road, and the eastern boundary follows along North Hiawassee Road and continues to Lakeville Road.

Precinct 222S is with district assignments of U.S. Congress 11, State Senate 15, State House 40, County Commission 2, and School Board 7.

Precinct 907S is with district assignments of U.S. Congress 10, State Senate 15, State House 40, County Commission 2, and School Board 7.

For more detailed views of other county and municipal precincts, [visit the District and Precinct Maps page](#). For more information about precinct boundaries, contact the [Orange County Supervisor of Elections office](#)

This map was produced by the Orange County Supervisor of Elections Mapping Department. Additional voter information can be found [on our website](#).