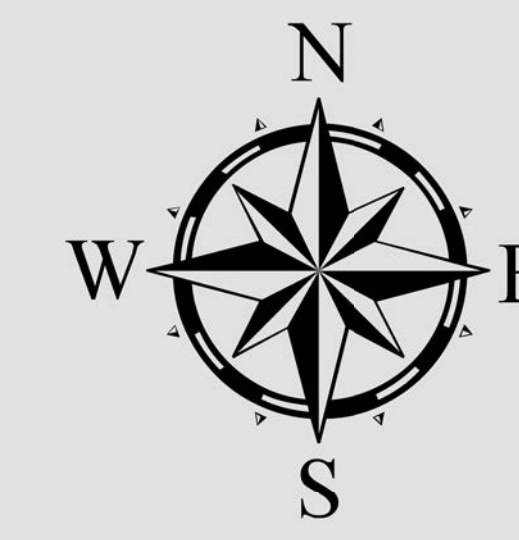


Seminole County
Orange County



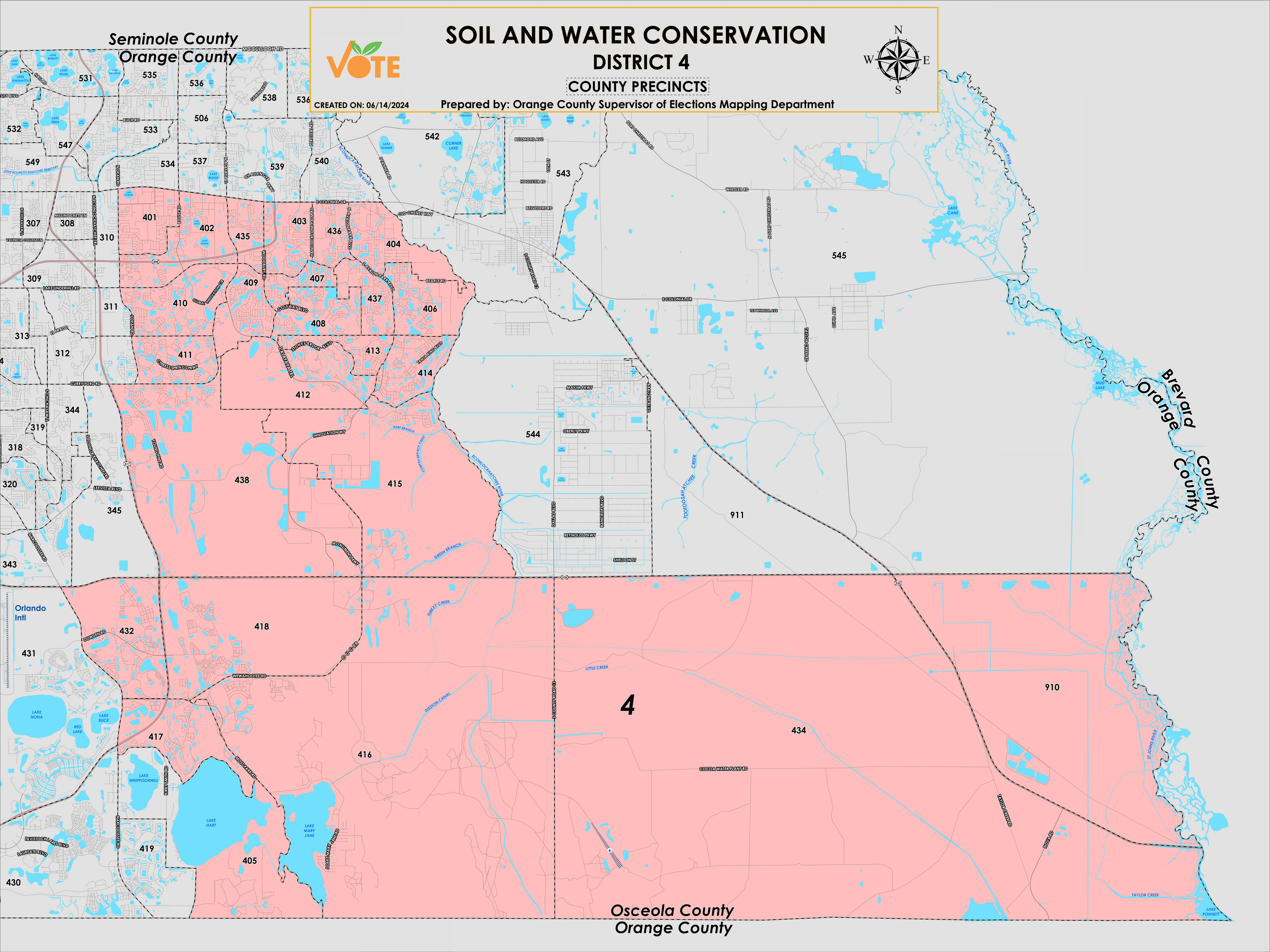
SOIL AND WATER CONSERVATION DISTRICT 4

COUNTY PRECINCTS



CREATED ON: 06/14/2024

Prepared by: Orange County Supervisor of Elections Mapping Department



Orange County's Soil & Water District 4 is made up of Orange County precincts. The boundary of this district approximately extends to the South and East boundaries of Osceola and Brevard counties. The Western border loosely follows sections of Dean Rd, State Hwy 417, State Rd 528, Narcoossee Rd, Kirby Smith Rd, and the western side of Lake Hart. The northern edge of Soil & Water District 4 follows Colonial Dr, Econlockhatchee River and State Rd 528.

For more detailed views of other county and municipal precincts, including their precinct splits, [visit the District and Precinct Maps page](#). For more information about precinct boundaries, contact the [Orange County Supervisor of Elections office](#).

This map was produced by the Orange County Supervisor of Elections Mapping Department. More voter information can be found [on our website](#).

The Orange County precincts that are within Soil & Water District 4 are:

- 401 -418
- 432
- 434 -438
- 910